

Committed to supporting Tasmanian businesses
and families for more than 130 years

Move  forward



At WLF Accounting & Advisory we're committed to making Tasmania a better place and we know that the best way to achieve this is through our clients' success. Success looks different for everyone but whatever your goals it's easier to achieve them when you are supported by a team of professionals.

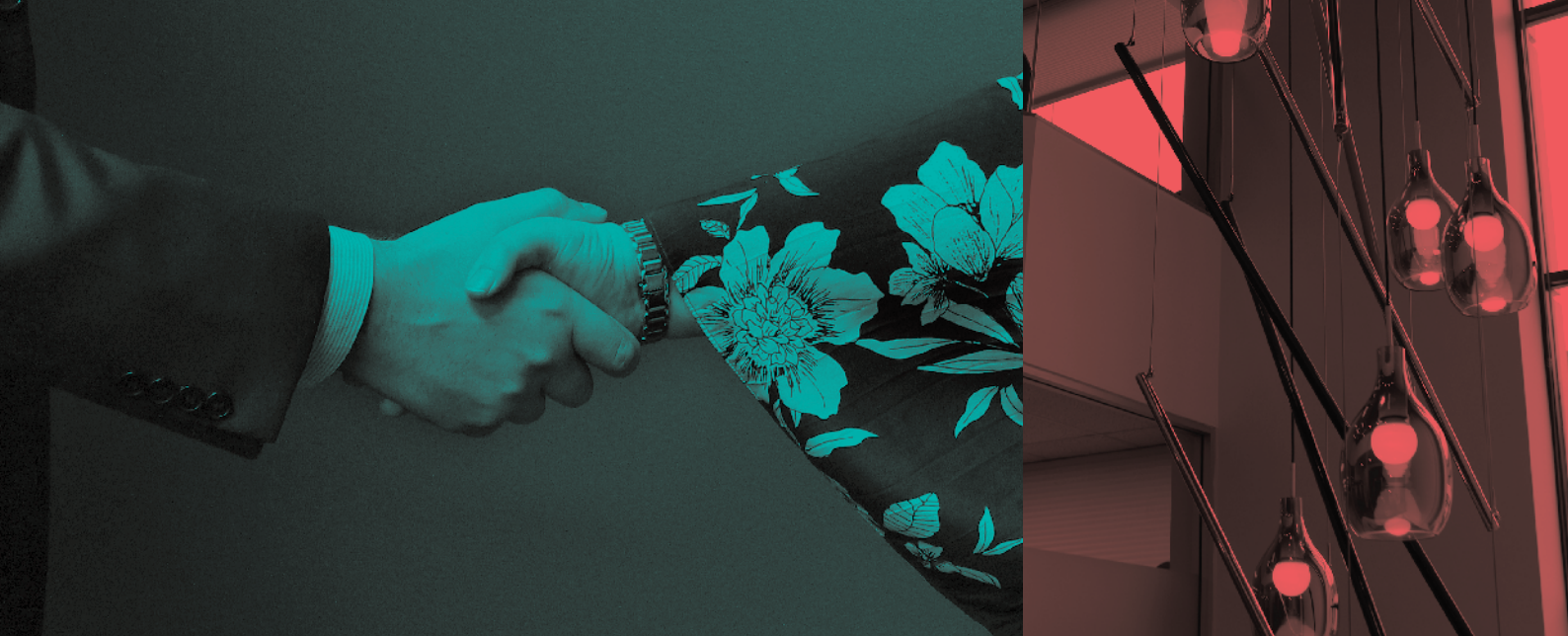
People are our focus at WLF. Our clients and our staff are our most important assets and recognizing this has seen our firm continue to grow for more than 130 years. Formerly Wise Lord and Ferguson, we have an impressive legacy of knowledge and a reputation for excellence. We are an independent Tasmanian firm of Chartered Accountants with more than 80 specialists. We are all based in Tasmania and never outsource our work.

We take a contemporary and innovative approach to the way we conduct business, maintaining our expertise in new and emerging technologies that deliver efficient results and value to our clients. Our close relationship with EY (formerly Ernst & Young) means we have access to international information and networks. Our staff regularly undertake training and professional development to ensure they are at the forefront of industry developments and are empowered to help you find the best and most appropriate solutions.

Whether you're an individual or family, a private business, a listed company, a government agency or a not-for-profit, our team approach will give you the absolute advantage: connecting with WLF means you have the very best accountants and advisors who are committed to positioning you and your organisation for success.

We look forward to working with you and helping you move forward.





Private businesses



As a local independent firm, we understand the unique business landscape. We offer expert services from getting the basics right through to asset protection, tax advice, structuring, KPI monitoring, cashflow forecasts through to succession. We add value and efficiencies through cloud technologies to help you grow and succeed in your business.

Corporate and listed companies



Our tailored services ensure your company can deal effectively with complex challenges and uncover great opportunities. From regulatory requirements, external audits to internal audits, tax advice and financial modelling to risk management, we will help you navigate the corporate environment and achieve your strategic goals.

Government and public sector



We understand the structured environment of the public sector. We look at your organisation holistically and deliver solutions to meet your statutory obligations and operational objectives. We are experts in integrating risk, strategy, governance and operations, audits, change management, and probity advice.

Not-for-profits and charities

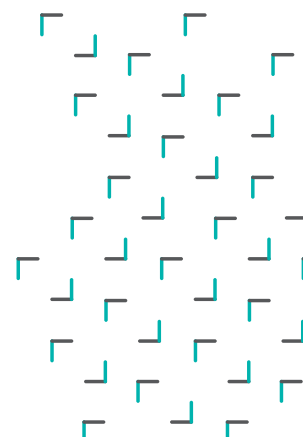


We were built on a foundation of supporting Tasmanians. We are committed to helping you go about your business of helping others and improving our community. Talk to our team for governance support, board training and audits; managing financial and accounting needs, due diligence, risk management, compliance advice and solutions.

Personal and families



Our advisors will help you make the best decisions today so your family can enjoy the benefits of your hard work now and in the future. Guiding and protecting you, we work in with our financial planning partner, UNICA Wealth to help you with all your personal needs from tax, super and wealth advice – all giving you piece of mind it is being taken care of.



The strong relationships we build with our clients are just as important as our technical expertise. We take the time to understand your needs so we can connect you with the right people and provide the best solutions.

Set us a challenge – talk to us about where you are now and where you'd like to be in the future. We'll bring together the right team to support you, help you recognize opportunities, avoid unnecessary risks and make bold decisions that are backed by sound advice.

P | 03 6223 6155
E | email@wlf.com.au
W | wlf.com.au

GPO Box 1083 Hobart Tas 7001
First Floor 160 Collins Street Hobart Tas 7000

